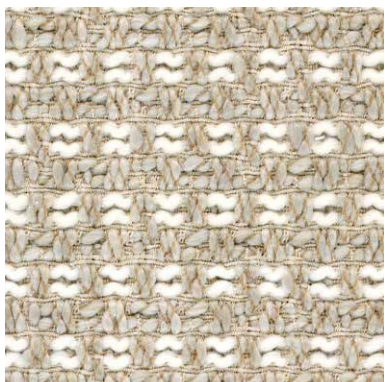


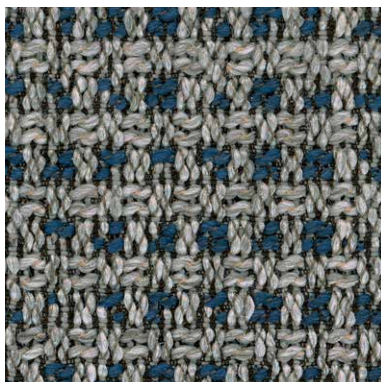
Tessuti outdoor / *Outdoor fabrics*

CAT. V

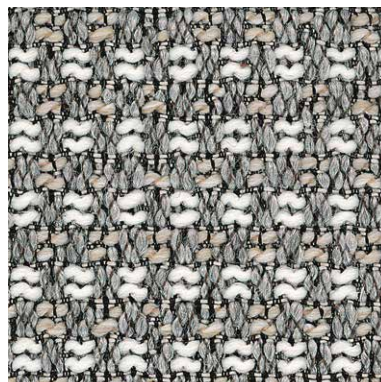
Versailles



VERSAILLES 058



VERSAILLES 061



VERSAILLES 063



VERSAILLES 092

INFORMAZIONI TECNICHE / TECHNICAL INFORMATION

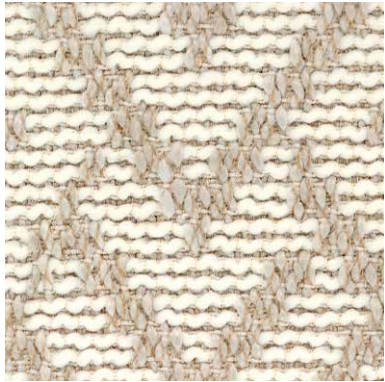
Composizione / composition	100% PP
Martindale / martindale	40.000 cicli/cycles
Pilling / Pilling	5

MANUTENZIONE / MAINTENANCE

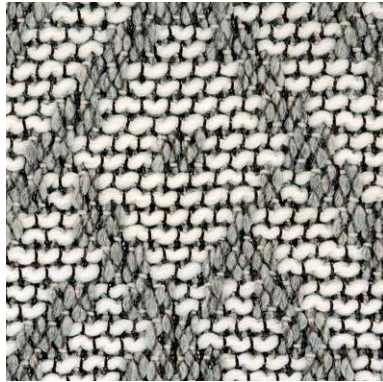


CAT. V

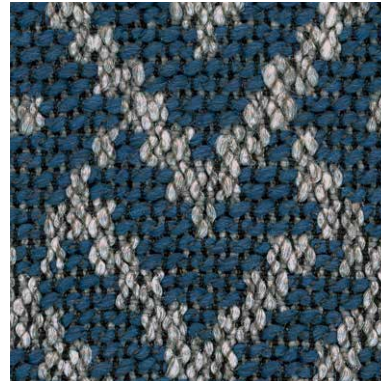
Valley



VALLEY 019



VALLEY 042



VALLEY 053

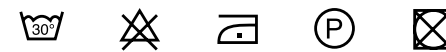


VALLEY 093

INFORMAZIONI TECNICHE / TECHNICAL INFORMATION

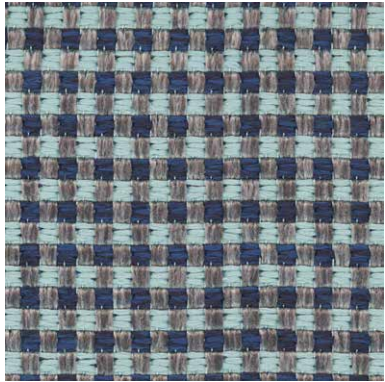
Composizione / composition	100% PP
Martindale / martindale	40.000 cicli/cycles
Pilling / Pilling	5

MANUTENZIONE / MAINTENANCE

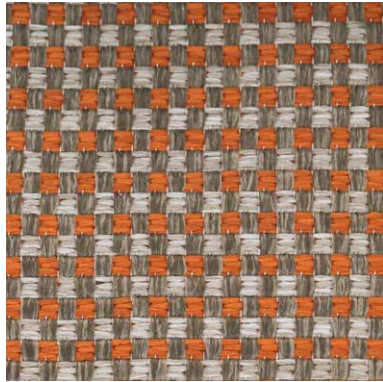


CAT. V

Valencia



VALENCIA 004



VALENCIA 006



VALENCIA 007

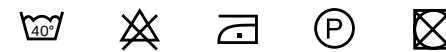


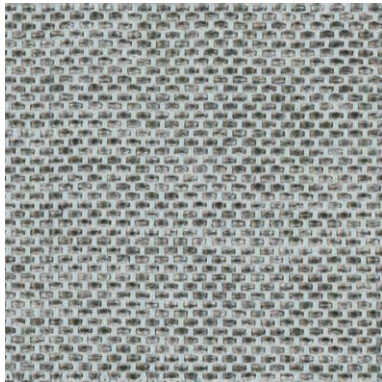
VALENCIA 009

INFORMAZIONI TECNICHE / TECHNICAL INFORMATION

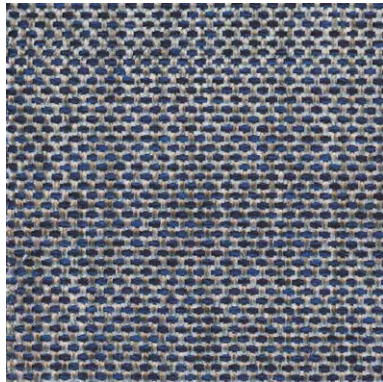
Composizione / composition	95%PP - 5%PL
Martindale / martindale	50.000 cicli/cycles
Pilling / Pilling	4

MANUTENZIONE / MAINTENANCE

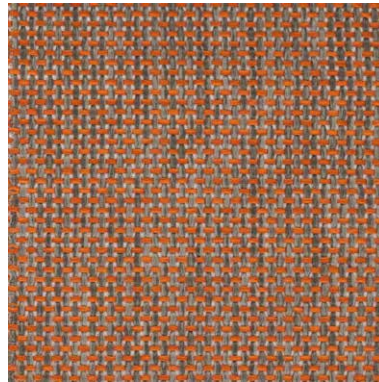




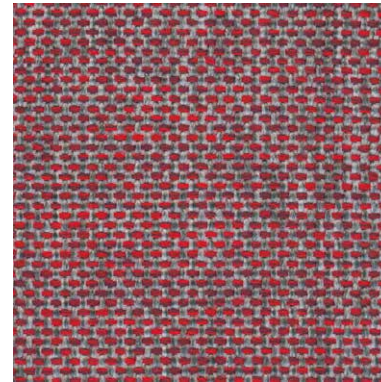
URBINO 031



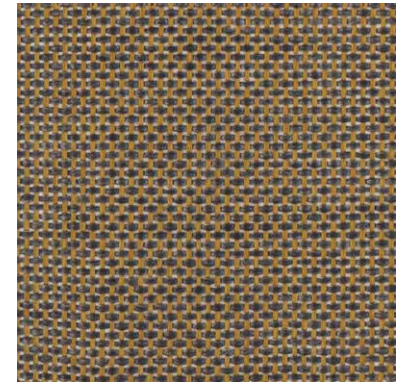
URBINO 032



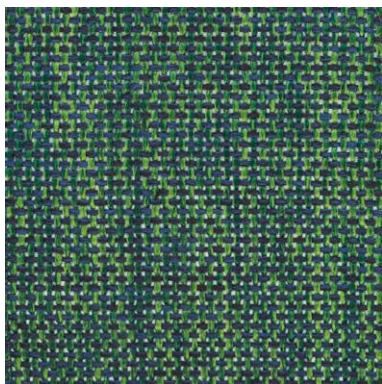
URBINO 033



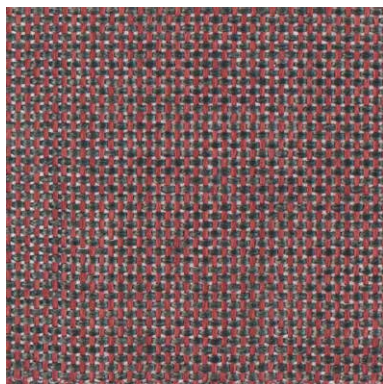
URBINO 034



URBINO 035



URBINO 036



URBINO 037



URBINO 038

INFORMAZIONI TECNICHE / TECHNICAL INFORMATION

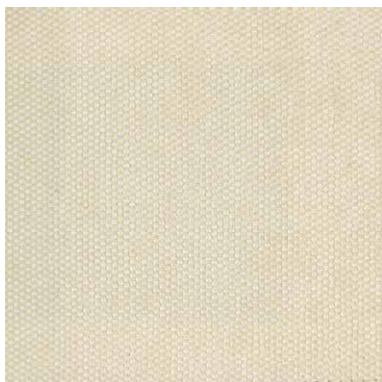
Composizione / composition	63%PP - 37%PL
Martindale / martindale	50.000 cicli/cycles
Pilling / Pilling	4

MANUTENZIONE / MAINTENANCE



CAT. U


Upper




UPPER 649

INFORMAZIONI TECNICHE / TECHNICAL INFORMATION

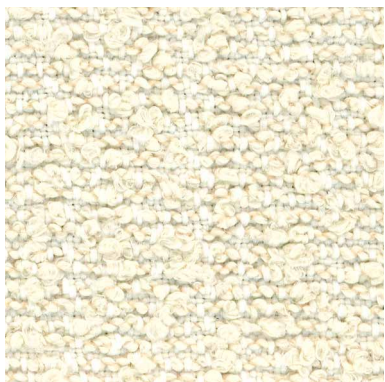
Composizione / composition	100% PC
Martindale / martindale	26.000 cicli/cycles
Pilling / Pilling	4

 **idrorepellente**
water repellent

 **antimacchia**
stain resistant

MANUTENZIONE / MAINTENANCE





UPDATE 001



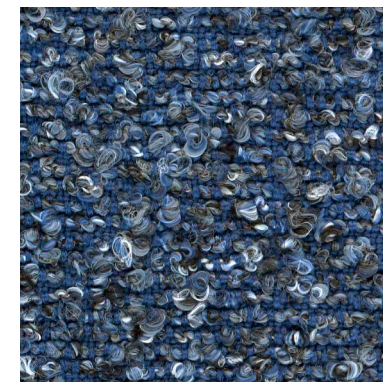
UPDATE 002



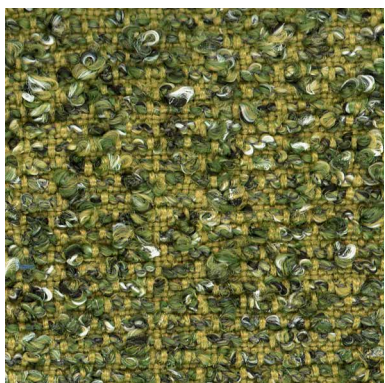
UPDATE 003



UPDATE 004



UPDATE 009



UPDATE 010

INFORMAZIONI TECNICHE / TECHNICAL INFORMATION

Composizione / composition	93% RPP - 7% PL
Martindale / martindale	35.000 cicli/cycles
Pilling / Pilling	4/5

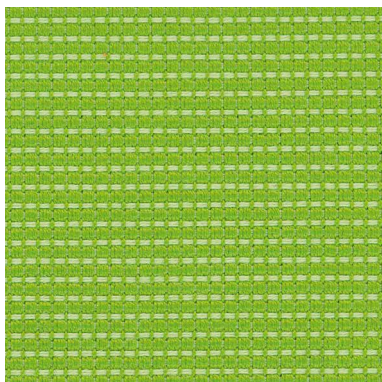
 Eco-friendly

MANUTENZIONE / MAINTENANCE

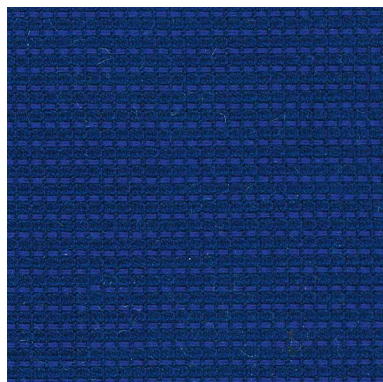


CAT. U

Umbria




UMBRIA 839




UMBRIA 840

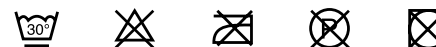
INFORMAZIONI TECNICHE / TECHNICAL INFORMATION

Composizione / composition	100% PC
Martindale / martindale	20.000 cicli/cycles
Pilling / Pilling	5

 **idrorepellente**
water repellent

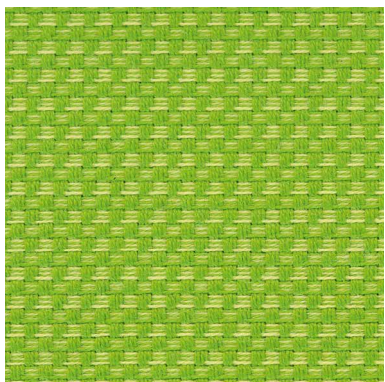
 **antimacchia**
stain resistant

MANUTENZIONE / MAINTENANCE

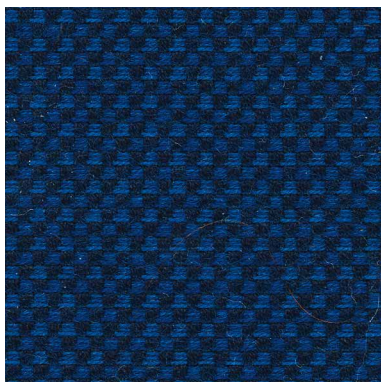


CAT. U

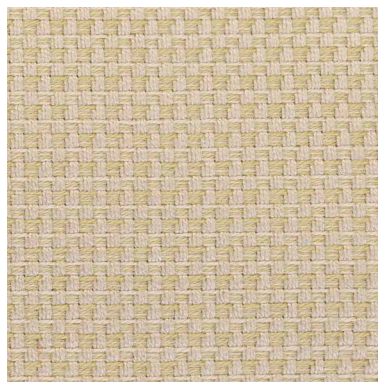
Umago



UMAGO 942




UMAGO 944




UMAGO 945

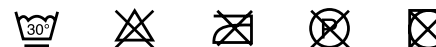
INFORMAZIONI TECNICHE / TECHNICAL INFORMATION

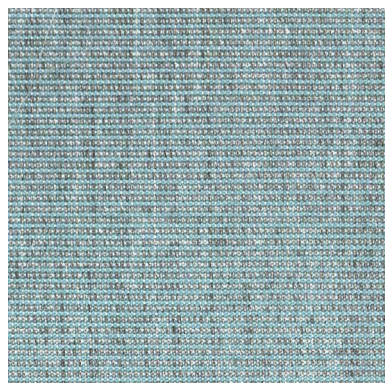
Composizione / composition	100% PC
Martindale / martindale	20.000 cicli/cycles
Pilling / Pilling	4

 **idrorepellente**
water repellent

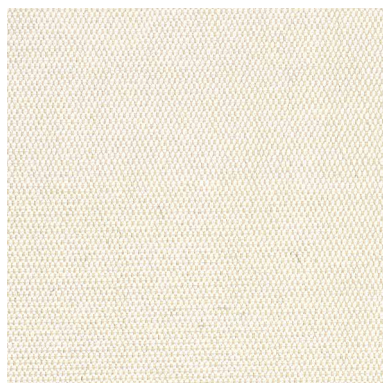
 **antimacchia**
stain resistant

MANUTENZIONE / MAINTENANCE

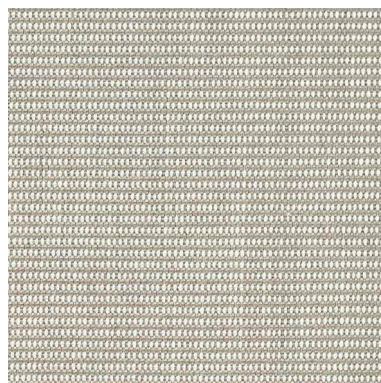




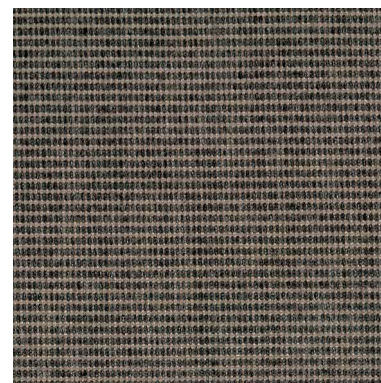
TROPIC 502



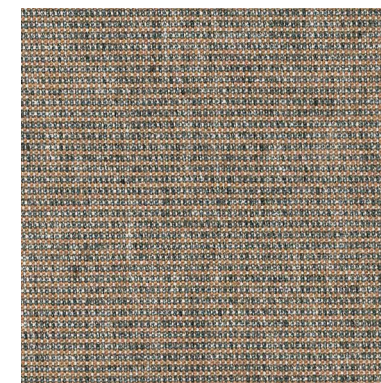
TROPIC 503



TROPIC 511




TROPIC 532



TROPIC 535

INFORMAZIONI TECNICHE / TECHNICAL INFORMATION

Composizione / composition	100% PC
Martindale / martindale	20.000 cicli/cycles
Pilling / Pilling	5


idrorepellente
 water repellent

MANUTENZIONE / MAINTENANCE

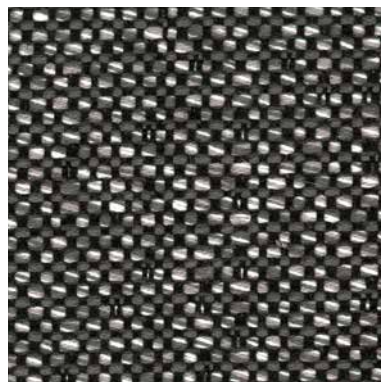




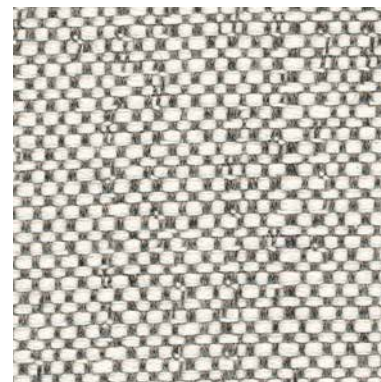
THAI 570



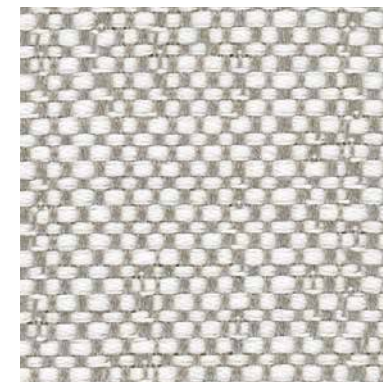
THAI 573



THAI 575




THAI 576



THAI 580

INFORMAZIONI TECNICHE / TECHNICAL INFORMATION

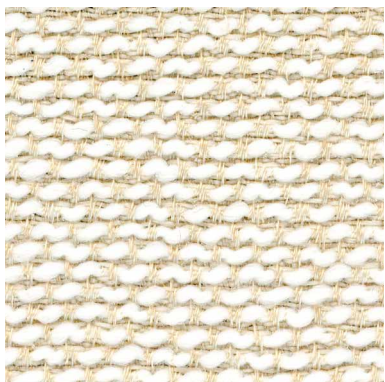
Composizione / composition	100% PC
Martindale / martindale	20.000 cicli/cycles
Pilling / Pilling	5

 **idrorepellente**
water repellent

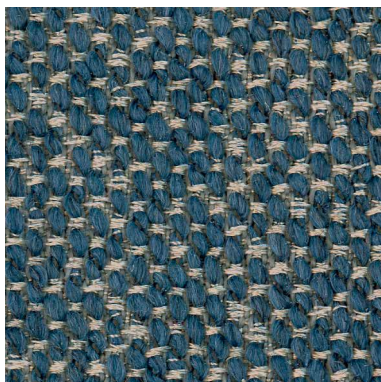
MANUTENZIONE / MAINTENANCE


CAT. T

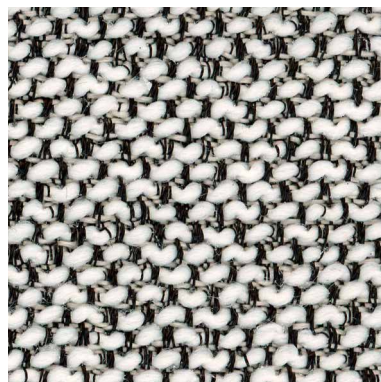
Tivoli



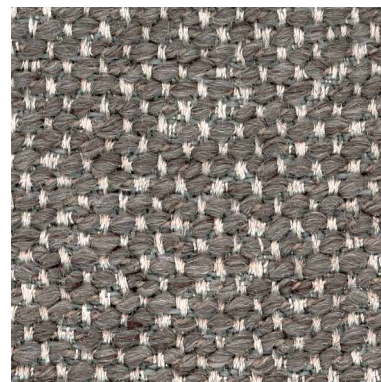
TIVOLI 007



TIVOLI 008



TIVOLI 018

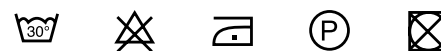


TIVOLI 084

INFORMAZIONI TECNICHE / TECHNICAL INFORMATION

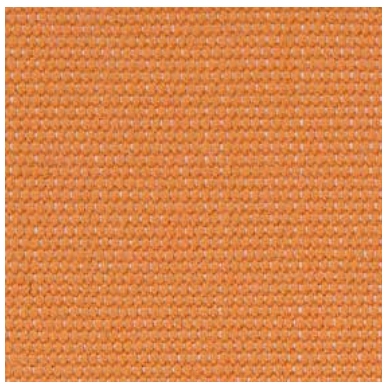
Composizione / composition	100% PP
Martindale / martindale	30.000 cicli/cycles
Pilling / Pilling	4

MANUTENZIONE / MAINTENANCE



CAT. T

Taipei




TAIPEI 757




TAIPEI 758

INFORMAZIONI TECNICHE / TECHNICAL INFORMATION

Composizione / composition	100% PC
Martindale / martindale	20.000 cicli/cycles
Pilling / Pilling	4

 **idrorepellente**
water repellent

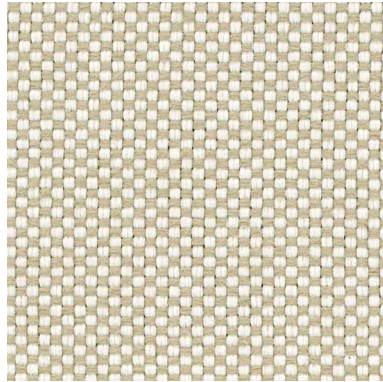
 **antimacchia**
stain resistant

MANUTENZIONE / MAINTENANCE

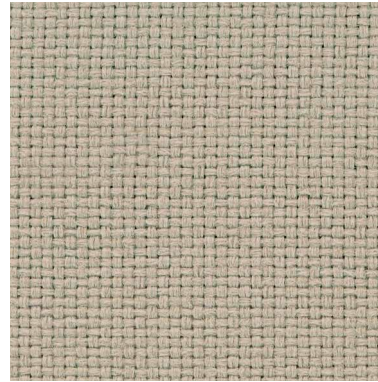




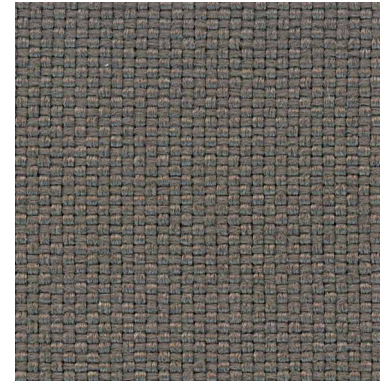
PERTH 001



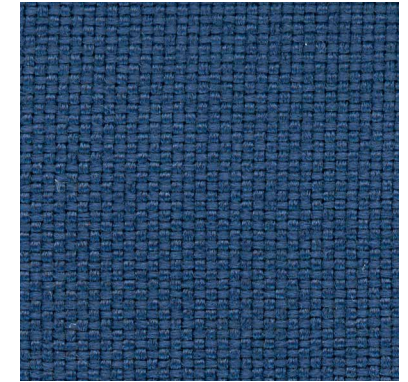
PERTH 002



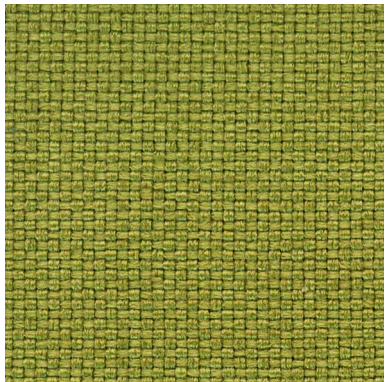
PERTH 003



PERTH 004



PERTH 009



PERTH 010

INFORMAZIONI TECNICHE / TECHNICAL INFORMATION

Composizione / composition	100% REC. PP
Martindale / martindale	50.000 cicli/cycles
Pilling / Pilling	4/5



MANUTENZIONE / MAINTENANCE



**DITRE
ITALIA**

31016 Cordignano (Treviso) Zona Industriale Via del Lavoro, 21
Tel. +39.0438.9999 Fax +39.0438.999993 www.ditreitalia.com info@ditreitalia.it