

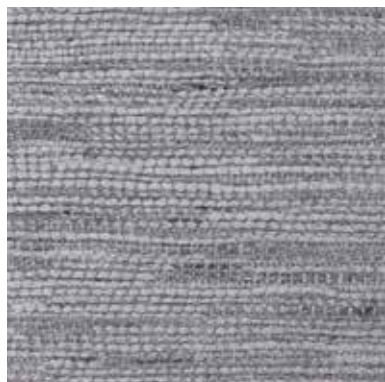
Tessuti / *Fabrics*

CAT. U

Upside



UPSIDE 102



UPSIDE 105



UPSIDE 106



UPSIDE 108



UPSIDE 112



UPSIDE 116



UPSIDE 118

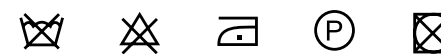


UPSIDE 120

INFORMAZIONI TECNICHE / TECHNICAL INFORMATION

Composizione / composition	41% VI - 26% CO - 21% LI - 5% PL
Martindale / martindale	36.000 cicli/cycles
Pilling / Pilling	4

MANUTENZIONE / MAINTENANCE



CAT. U

Ulan



ULAN 9



ULAN 13



ULAN 14



ULAN 15



ULAN 140



ULAN 141



ULAN 142



ULAN 144



ULAN 144

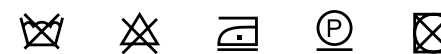


ULAN 145

INFORMAZIONI TECNICHE / TECHNICAL INFORMATION

Composizione / composition	59% PL - 25% CO - 9% PA - 7% EA
Martindale / martindale	100.000 cicli/cycles
Pilling / Pilling	3/4

MANUTENZIONE / MAINTENANCE



CAT. U

Universal



UNIVERSAL 02



UNIVERSAL 05



UNIVERSAL 11



UNIVERSAL 25



UNIVERSAL 26



UNIVERSAL 32



UNIVERSAL 33

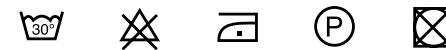


UNIVERSAL 50

INFORMAZIONI TECNICHE / TECHNICAL INFORMATION

Composizione / composition	24% CA - 44% LI - 32% CO
Martindale / martindale	30.000 cicli/cycles
Pilling / Pilling	3/4

MANUTENZIONE / MAINTENANCE



CAT. U

Ubud



UBUD 001



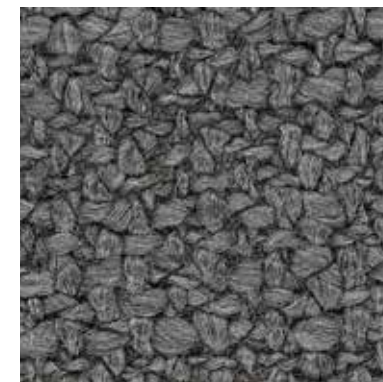
UBUD 003



UBUD 008



UBUD 009



UBUD 013



UBUD 014



UBUD 016



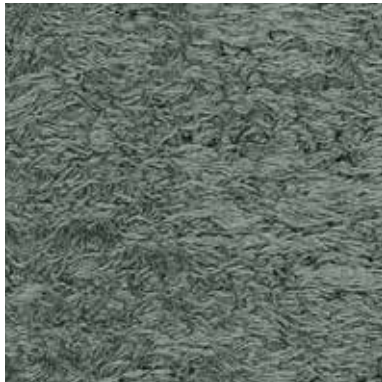
UBUD 017

INFORMAZIONI TECNICHE / TECHNICAL INFORMATION

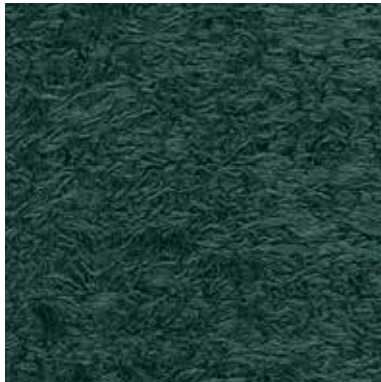
Composizione / composition	55% PC - 25% CO - 13% WO - 5% PL - 2% PA
Martindale / martindale	40.000 cicli/cycles
Pilling / Pilling	3

MANUTENZIONE / MAINTENANCE

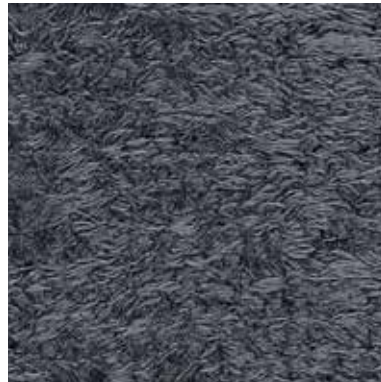




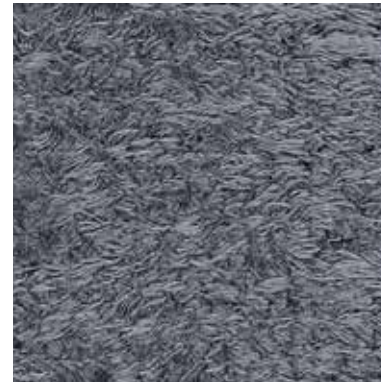
UBER 001



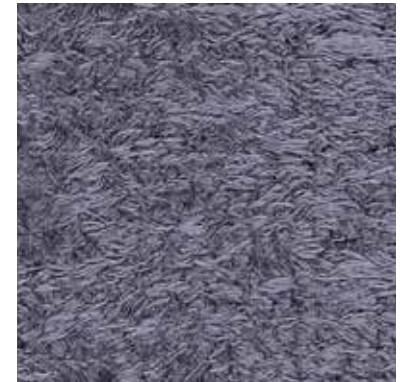
UBER 004



UBER 005



UBER 006



UBER 007



UBER 010



UBER 011



UBER 013



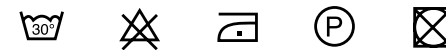
UBER 014



UBER 015

INFORMAZIONI TECNICHE / TECHNICAL INFORMATION

Composizione / composition	59% PC - 41% PL
Martindale / martindale	30.000 cicli/cycles
Pilling / Pilling	3/4

MANUTENZIONE / MAINTENANCE

CAT. U

Uber



UBER 016



UBER 017



UBER 021



UBER 023

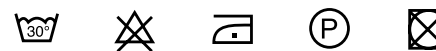


UBER 024

INFORMAZIONI TECNICHE / TECHNICAL INFORMATION

Composizione / composition	59% PC - 41% PL
Martindale / martindale	30.000 cicli/cycles
Pilling / Pilling	3/4

MANUTENZIONE / MAINTENANCE



CAT. T

Trend



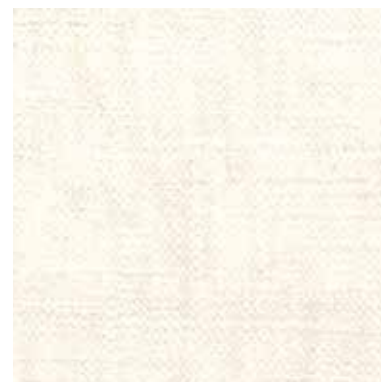
TREND 001



TREND 002



TREND 003



TREND 004



TREND 010



TREND 011



TREND 033



TREND 034



TREND 035

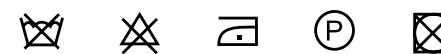


TREND 039

INFORMAZIONI TECNICHE / TECHNICAL INFORMATION

Composizione / composition	55% VI - 45% CO
Martindale / martindale	50.000 cicli/cycles
Pilling / Pilling	4

MANUTENZIONE / MAINTENANCE



CAT. T

Trend



TREND 044



TREND 052



TREND 068



TREND 088



TREND 231



TREND 232



TREND 233



TREND 234

INFORMAZIONI TECNICHE / TECHNICAL INFORMATION

Composizione / composition	55% VI - 45% CO
Martindale / martindale	50.000 cicli/cycles
Pilling / Pilling	4

MANUTENZIONE / MAINTENANCE

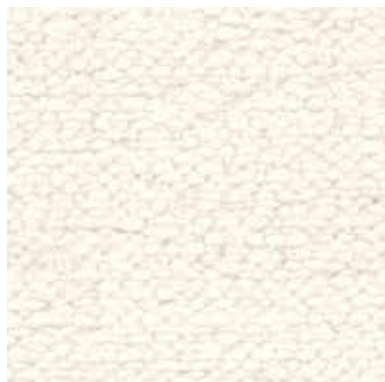


CAT. T

Tosca



TOSCA 100



TOSCA 111



TOSCA 200



TOSCA 304



TOSCA 400



TOSCA 401



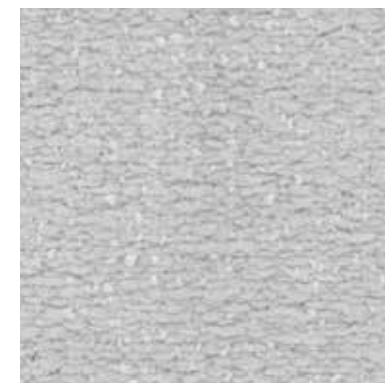
TOSCA 402



TOSCA 403



TOSCA 500



TOSCA 600

INFORMAZIONI TECNICHE / TECHNICAL INFORMATION

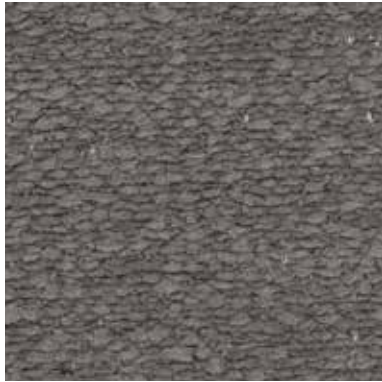
Composizione / composition	96% PL - 4% EA
Martindale / martindale	40.000 cicli/cycles
Pilling / Pilling	4/5

MANUTENZIONE / MAINTENANCE



CAT. T

Tosca



TOSCA 601



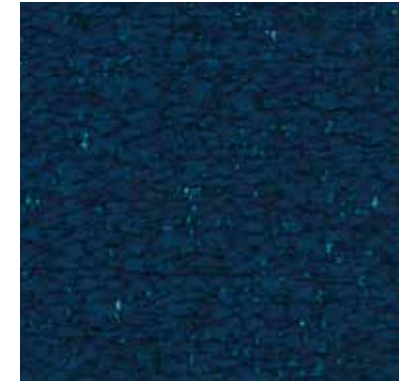
TOSCA 605



TOSCA 700



TOSCA 702

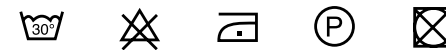


TOSCA 704

INFORMAZIONI TECNICHE / TECHNICAL INFORMATION

Composizione / composition	96% PL - 4% EA
Martindale / martindale	40.000 cicli/cycles
Pilling / Pilling	4/5

MANUTENZIONE / MAINTENANCE





TORINO 007



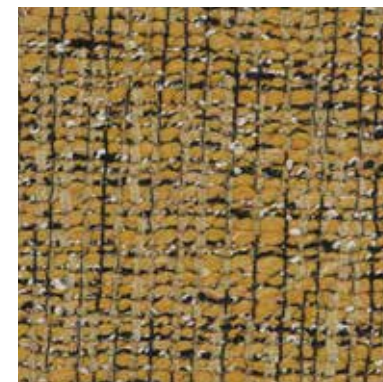
TORINO 012



TORINO 016



TORINO 017



TORINO 018



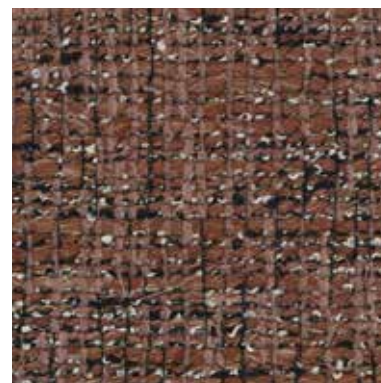
TORINO 021



TORINO 023



TORINO 024



TORINO 025



TORINO 038

INFORMAZIONI TECNICHE / TECHNICAL INFORMATION

Composizione / composition	53%PC - 18%PL - 15%CO - 6%LI - 6%VI - 2%PA
Martindale / martindale	30.000 cicli/cycles
Pilling / Pilling	3

MANUTENZIONE / MAINTENANCE

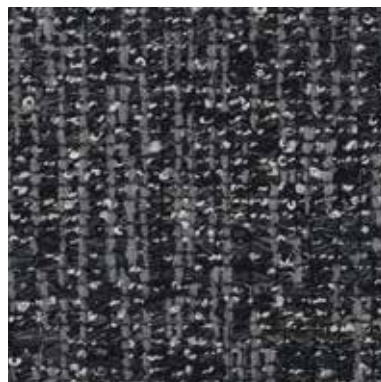




TORINO 039



TORINO 042



TORINO 043



TORINO 070



TORINO 121

INFORMAZIONI TECNICHE / TECHNICAL INFORMATION

Composizione / composition	53%PC - 18%PL - 15%CO - 6%LI - 6%VI - 2%PA
Martindale / martindale	30.000 cicli/cycles
Pilling / Pilling	3

MANUTENZIONE / MAINTENANCE

CAT. T

Toledo



TOLEDO 102



TOLEDO 103



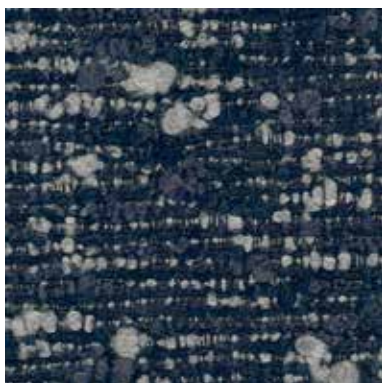
TOLEDO 104



TOLEDO 105



TOLEDO 107



TOLEDO 108



TOLEDO 109

INFORMAZIONI TECNICHE / TECHNICAL INFORMATION

Composizione / composition	58% PC - 30% PL - 12% WO
Martindale / martindale	30.000 cicli/cycles
Pilling / Pilling	4

MANUTENZIONE / MAINTENANCE



CAT. T

Time



TIME 007



TIME 010



TIME 024



TIME 029



TIME 035



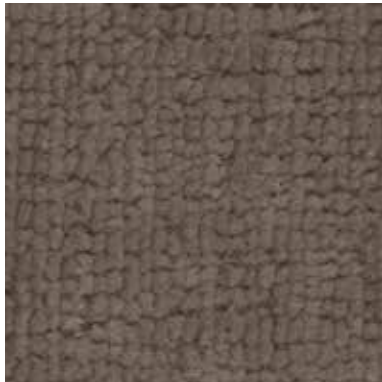
TIME 036

INFORMAZIONI TECNICHE / TECHNICAL INFORMATION

Composizione / composition	49% PC - 14% CO - 14% PL - 23% LI
Martindale / martindale	>35.000 cicli/cycles
Pilling / Pilling	4

MANUTENZIONE / MAINTENANCE





TEXAS 004



TEXAS 008



TEXAS 011



TEXAS 013



TEXAS 015



TEXAS 016



TEXAS 018



TEXAS 022



TEXAS 023



TEXAS 025

INFORMAZIONI TECNICHE / TECHNICAL INFORMATION

Composizione / composition	72 % RPET - 28% PL
Martindale / martindale	60.000 cicli/cycles
Pilling / Pilling	5

 Eco-Friendly

MANUTENZIONE / MAINTENANCE



CAT. T

Teddy



TEDDY 25



TEDDY 27



TEDDY 102



TEDDY 110



TEDDY 111



TEDDY 116



TEDDY 117



TEDDY 121



TEDDY 201

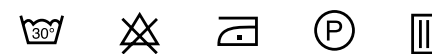


TEDDY 204

INFORMAZIONI TECNICHE / TECHNICAL INFORMATION

Composizione / composition	80% PL - 20% CO
Martindale / martindale	100.000 cicli/cycles
Pilling / Pilling	4

MANUTENZIONE / MAINTENANCE



CAT. T

Teddy



TEDDY 207



TEDDY 209

INFORMAZIONI TECNICHE / TECHNICAL INFORMATION

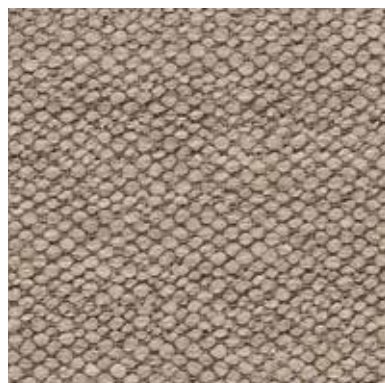
Composizione / composition	80% PL - 20% CO
Martindale / martindale	100.000 cicli/cycles
Pilling / Pilling	4

MANUTENZIONE / MAINTENANCE



CAT. T

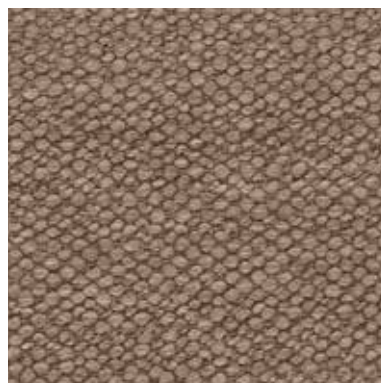
Tape



TAPE 304



TAPE 305



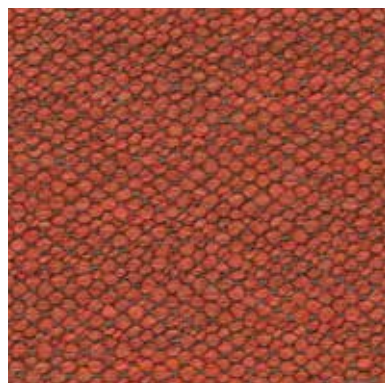
TAPE 306



TAPE 311



TAPE 314



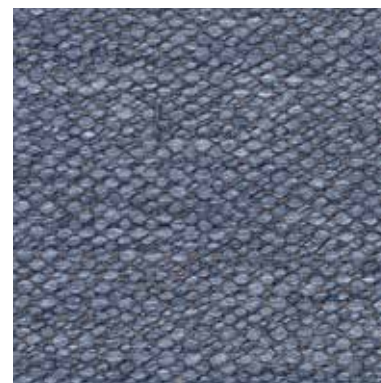
TAPE 315



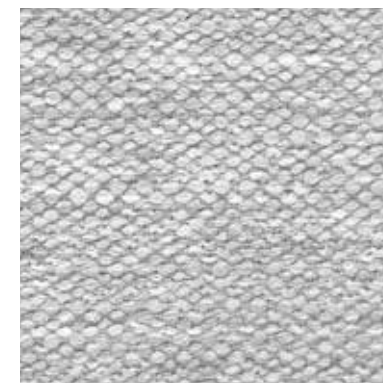
TAPE 316



TAPE 318



TAPE 320

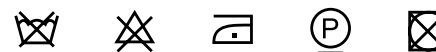


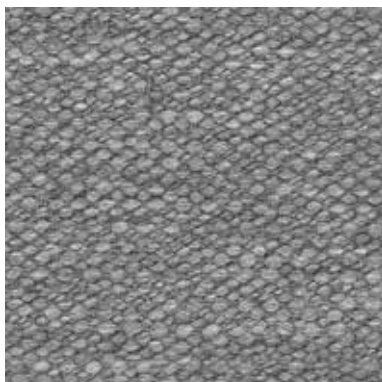
TAPE 321

INFORMAZIONI TECNICHE / TECHNICAL INFORMATION

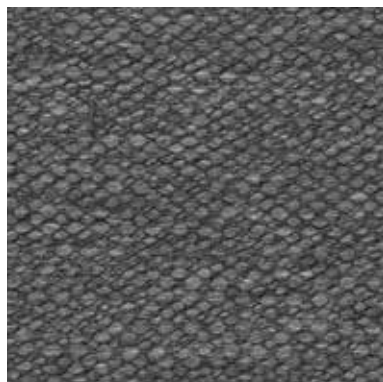
Composizione / composition	49% PC - 23% PL - 23% VI - 5% CO
Martindale / martindale	30.000 cicli/cycles
Pilling / Pilling	3/4

MANUTENZIONE / MAINTENANCE





TAPE 322



TAPE 323

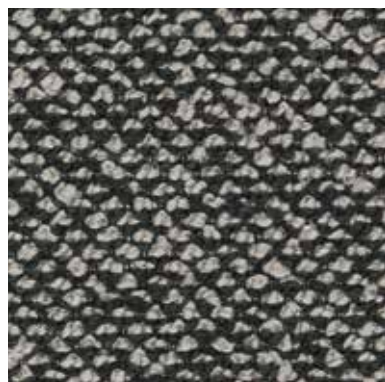
INFORMAZIONI TECNICHE / TECHNICAL INFORMATION

Composizione / composition	49% PC - 23% PL - 23% VI - 5% CO
Martindale / martindale	30.000 cicli/cycles
Pilling / Pilling	3/4

MANUTENZIONE / MAINTENANCE

CAT. T

Tango



TANGO 003



TANGO 004



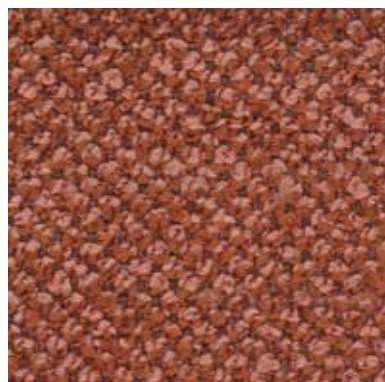
TANGO 005



TANGO 008



TANGO 010



TANGO 012



TANGO 014



TANGO 015



TANGO 017

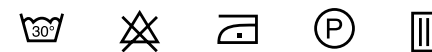


TANGO 018

INFORMAZIONI TECNICHE / TECHNICAL INFORMATION

Composizione / composition	70% PC - 25% PL - 5% CO
Martindale / martindale	50.000 cicli/cycles
Pilling / Pilling	4

MANUTENZIONE / MAINTENANCE



CAT. T

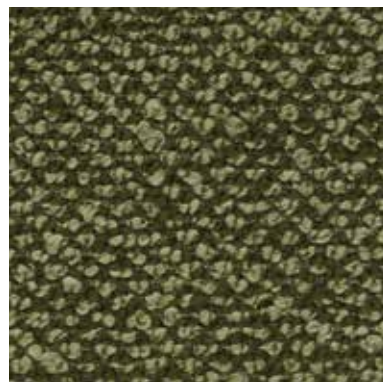
Tango



TANGO 020



TANGO 021



TANGO 022



TANGO 025



TANGO 027

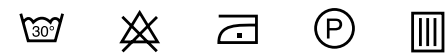


TANGO 028

INFORMAZIONI TECNICHE / TECHNICAL INFORMATION

Composizione / composition	70% PC - 25% PL - 5% CO
Martindale / martindale	50.000 cicli/cycles
Pilling / Pilling	4

MANUTENZIONE / MAINTENANCE



CAT. T

Tallin



TALLIN 04



TALLIN 05



TALLIN 06



TALLIN 11



TALLIN 14



TALLIN 15



TALLIN 016



TALLIN 18



TALLIN 20

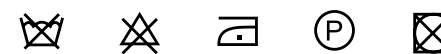


TALLIN 21

INFORMAZIONI TECNICHE / TECHNICAL INFORMATION

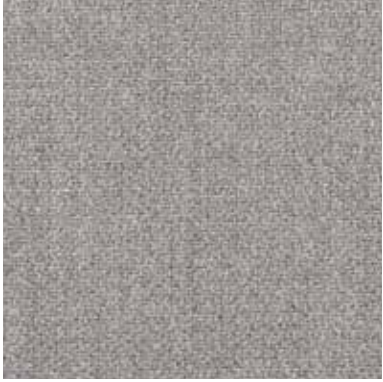
Composizione / composition	90% CO - 10% PL
Martindale / martindale	30.000 cicli/cycles
Pilling / Pilling	3/4

MANUTENZIONE / MAINTENANCE

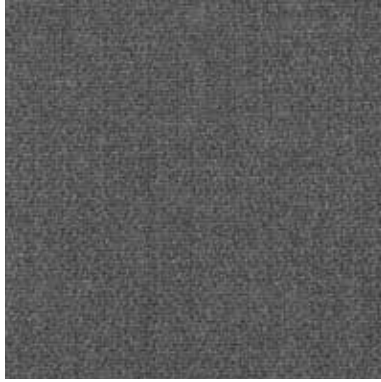


CAT. T

Tallin



TALLIN 22



TALLIN 23

INFORMAZIONI TECNICHE / TECHNICAL INFORMATION

Composizione / composition	90% CO - 10% PL
Martindale / martindale	30.000 cicli/cycles
Pilling / Pilling	3/4

MANUTENZIONE / MAINTENANCE



CAT. P

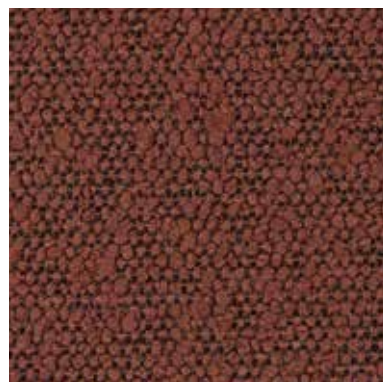
Princess



PRINCESS 901



PRINCESS 101



PRINCESS 300



PRINCESS 304



PRINCESS 400



PRINCESS 502



PRINCESS 600



PRINCESS 604



PRINCESS 705



PRINCESS 802

INFORMAZIONI TECNICHE / TECHNICAL INFORMATION

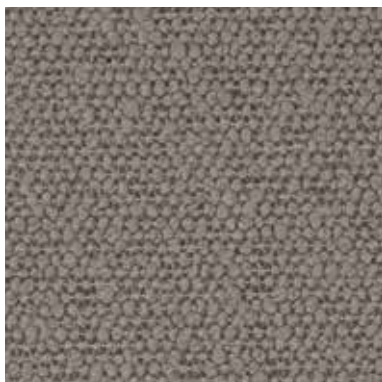
Composizione / composition	100% PLFR
Martindale / martindale	80.000 cicli/cycles
Pilling / Pilling	5

MANUTENZIONE / MAINTENANCE



CAT. P

Princess



PRINCESS 803



PRINCESS 903

INFORMAZIONI TECNICHE / TECHNICAL INFORMATION

Composizione / composition	100% PLFR
Martindale / martindale	80.000 cicli/cycles
Pilling / Pilling	5

MANUTENZIONE / MAINTENANCE



CAT. P

Primula



PRIMULA 100



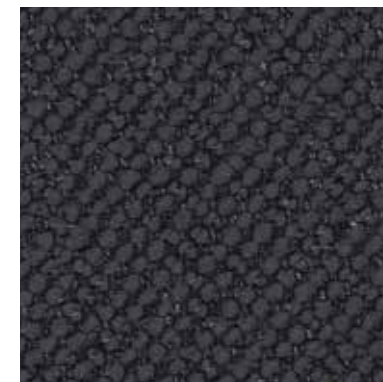
PRIMULA 101



PRIMULA 500



PRIMULA 600



PRIMULA 800



PRIMULA 802



PRIMULA 803



PRIMULA 901



PRIMULA 902



PRIMULA 903

INFORMAZIONI TECNICHE / TECHNICAL INFORMATION

Composizione / composition	97%PL - 3%LI
Martindale / martindale	100.000 cicli/cycles
Pilling / Pilling	4/5

MANUTENZIONE / MAINTENANCE





POTTER 501



POTTER 503



POTTER 509



POTTER 510



POTTER 512



POTTER 522



POTTER 524



POTTER 529



POTTER 530

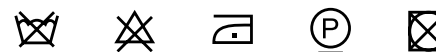


POTTER 539

INFORMAZIONI TECNICHE / TECHNICAL INFORMATION

Composizione / composition	34% PC - 24% CO - 14% WO - 12% VI - 12% PL - 4% LI
Martindale / martindale	30.000 cicli/cycles
Pilling / Pilling	4

MANUTENZIONE / MAINTENANCE





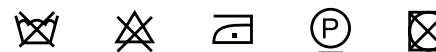
POTTER 540



POTTER 543

INFORMAZIONI TECNICHE / TECHNICAL INFORMATION

Composizione / composition	34% PC - 24% CO - 14% WO - 12% VI - 12% PL - 4% LI
Martindale / martindale	30.000 cicli/cycles
Pilling / Pilling	4

MANUTENZIONE / MAINTENANCE



POST 055



POST 058



POST 059



POST 062



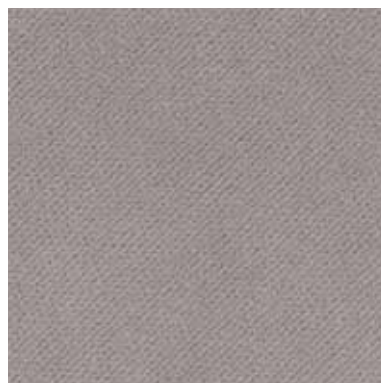
POST 076



POST 071



POST 205



POST 208



POST 096

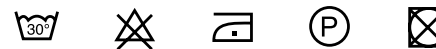


POST 094

INFORMAZIONI TECNICHE / TECHNICAL INFORMATION

Composizione / composition	100% PL
Martindale / martindale	60.000 cicli/cycles
Pilling / Pilling	5

MANUTENZIONE / MAINTENANCE



Si prega di notare che la tirella Post III è costituita dalle tirelle Post I e Post II / Please note that Post III swatch made up of Post I and Post II swatches.

CAT. P

Post I / Post III



POST 089



POST 093

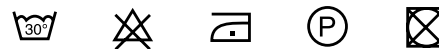


POST 203

INFORMAZIONI TECNICHE / TECHNICAL INFORMATION

Composizione / composition	100% PL
Martindale / martindale	60.000 cicli/cycles
Pilling / Pilling	5

MANUTENZIONE / MAINTENANCE



Si prega di notare che la tirella Post III è costituita dalle tirelle Post I e Post II / Please note that Post III swatch made up of Post I and Post II swatches.

CAT. P

Post II / Post III



POST 018



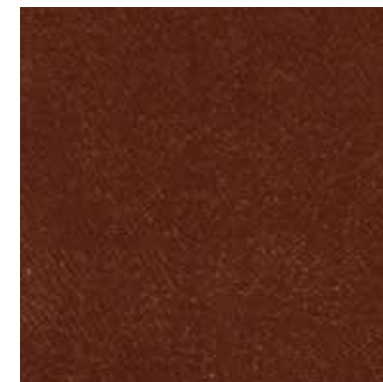
POST 019



POST 023



POST 032



POST 035



POST 041



POST 046



POST 049



POST 053



POST 058

INFORMAZIONI TECNICHE / TECHNICAL INFORMATION

Composizione / composition	100% PL
Martindale / martindale	60.000 cicli/cycles
Pilling / Pilling	5

MANUTENZIONE / MAINTENANCE



Si prega di notare che la tirella Post III è costituita dalle tirelle Post I e Post II / Please note that Post III swatch made up of Post I and Post II swatches.

CAT. P

Post II / Post III



POST 060



POST 064

INFORMAZIONI TECNICHE / TECHNICAL INFORMATION

Composizione / composition	100% PL
Martindale / martindale	60.000 cicli/cycles
Pilling / Pilling	5

MANUTENZIONE / MAINTENANCE



Si prega di notare che la tirella Post III è costituita dalle tirelle Post I e Post II / Please note that Post III swatch made up of Post I and Post II swatches.

CAT. P

Petra



PETRA 002



PETRA 010



PETRA 014



PETRA 020



PETRA 022



PETRA 026



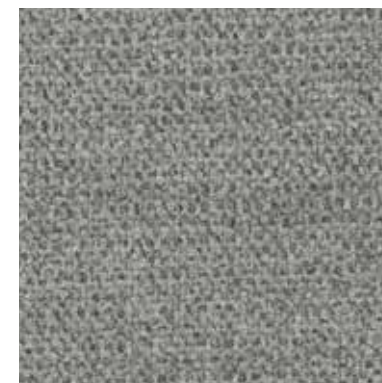
PETRA 029



PETRA 031



PETRA 036

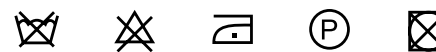


PETRA 037

INFORMAZIONI TECNICHE / TECHNICAL INFORMATION

Composizione / composition	41% CO - 36% PL - 23% PC
Martindale / martindale	25.000 cicli/cycles
Pilling / Pilling	5

MANUTENZIONE / MAINTENANCE



CAT. P

Petra



PETRA 038



PETRA 040



PETRA 041

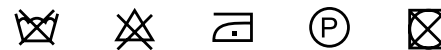


PETRA 042

INFORMAZIONI TECNICHE / TECHNICAL INFORMATION

Composizione / composition	41% CO - 36% PL - 23% PC
Martindale / martindale	25.000 cicli/cycles
Pilling / Pilling	5

MANUTENZIONE / MAINTENANCE





PECHINO 201



PECHINO 202



PECHINO 215



PECHINO 217



PECHINO 219



PECHINO 221



PECHINO 233



PECHINO 238



PECHINO 277



PECHINO 338

INFORMAZIONI TECNICHE / TECHNICAL INFORMATION

Composizione / composition	60% RCO - 40% PL
Martindale / martindale	60.000 cicli/cycles
Pilling / Pilling	5

 Eco-friendly

MANUTENZIONE / MAINTENANCE

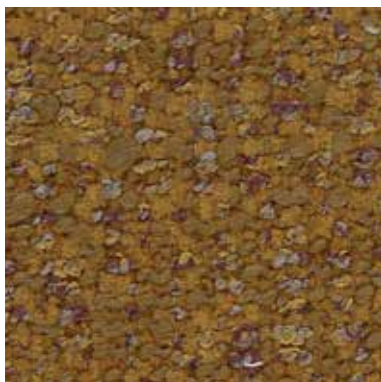


CAT. P

Patch



PATCH 034



PATCH 040



PATCH 045



PATCH 047



PATCH 048



PATCH 050



PATCH 052



PATCH 054



PATCH 055

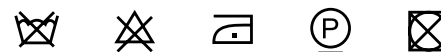


PATCH 059

INFORMAZIONI TECNICHE / TECHNICAL INFORMATION

Composizione / composition	50% PC - 34% PL - 10% WO - 6% CO
Martindale / martindale	30.000 cicli/cycles
Pilling / Pilling	4

MANUTENZIONE / MAINTENANCE





PATCH 061

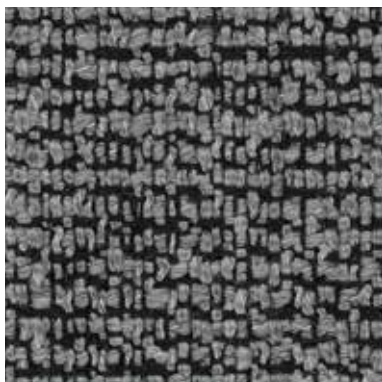


PATCH 075

INFORMAZIONI TECNICHE / TECHNICAL INFORMATION

Composizione / composition	50% PC - 34% PL - 10% WO - 6% CO
Martindale / martindale	30.000 cicli/cycles
Pilling / Pilling	4

MANUTENZIONE / MAINTENANCE



PABLO 09



PABLO 13



PABLO 49



PABLO 50



PABLO 75



PABLO 96



PABLO 154



PABLO 163



PABLO 168

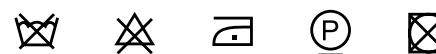


PABLO 171

INFORMAZIONI TECNICHE / TECHNICAL INFORMATION

Composizione / composition	23% WO - 48% PC - 12% PL - 7% CO - 10% NY
Martindale / martindale	24.000 cicli/cycles
Pilling / Pilling	4

MANUTENZIONE / MAINTENANCE



CAT. M

Milo



MILO 002



MILO 005



MILO 008



MILO 017



MILO 028



MILO 037



MILO 039



MILO 042



MILO 043

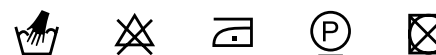


MILO 047

INFORMAZIONI TECNICHE / TECHNICAL INFORMATION

Composizione / composition	50% RCO - 32% VI - 18% LI
Martindale / martindale	50.000 cicli/cycles
Pilling / Pilling	4

MANUTENZIONE / MAINTENANCE

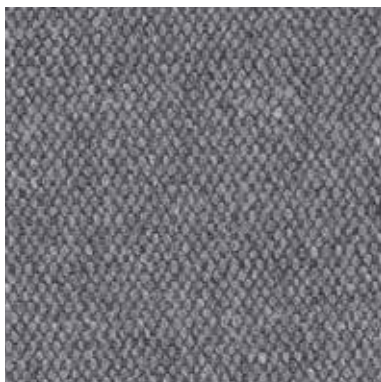


CAT. M

Milo



MILO 160



MILO 460



MILO 660

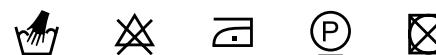


MILO 663

INFORMAZIONI TECNICHE / TECHNICAL INFORMATION

Composizione / composition	50% RCO - 32% VI - 18% LI
Martindale / martindale	50.000 cicli/cycles
Pilling / Pilling	4

MANUTENZIONE / MAINTENANCE



CAT. M

Memphis



MEMPHIS 402



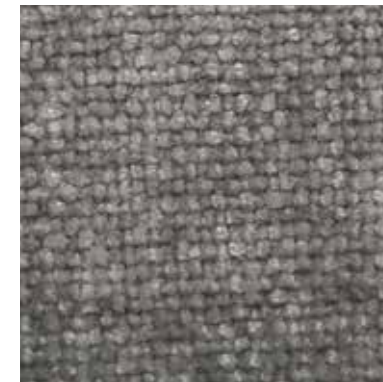
MEMPHIS 403



MEMPHIS 404



MEMPHIS 405



MEMPHIS 408



MEMPHIS 410



MEMPHIS 413



MEMPHIS 414



MEMPHIS 416

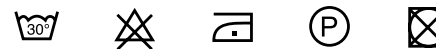


MEMPHIS 418

INFORMAZIONI TECNICHE / TECHNICAL INFORMATION

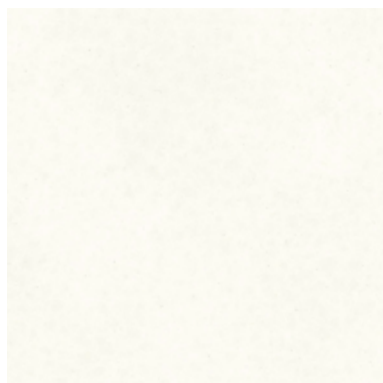
Composizione / composition	100% PL
Martindale / martindale	50.000 cicli/cycles
Pilling / Pilling	4/5

MANUTENZIONE / MAINTENANCE





MAYA 000



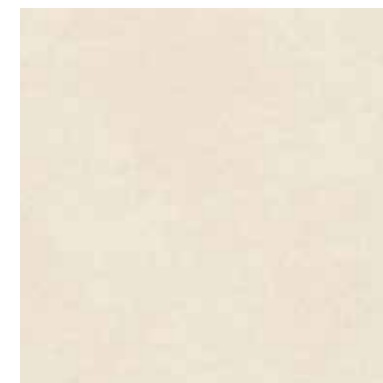
MAYA 001



MAYA 016



MAYA 020



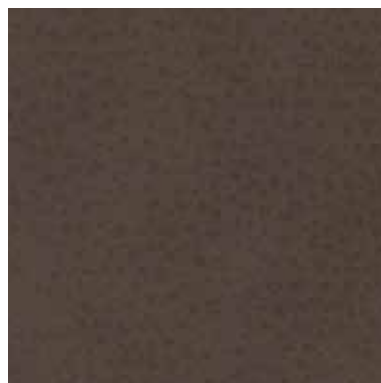
MAYA 100



MAYA 120



MAYA 175



MAYA 240



MAYA 275

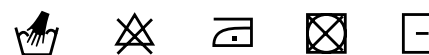


MAYA 280

INFORMAZIONI TECNICHE / TECHNICAL INFORMATION

Composizione / composition	30% CO - 2% PU - 68% PVC
Martindale / martindale	>50.000 cicli/cycles
Pilling / Pilling	-

MANUTENZIONE / MAINTENANCE





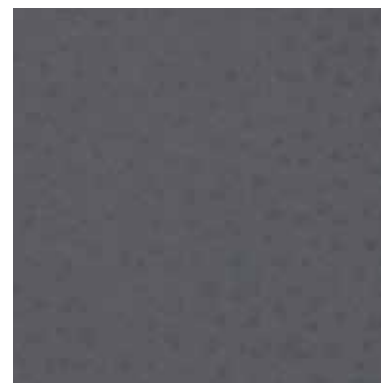
MAYA 410



MAYA 450



MAYA 750



MAYA 791



MAYA 950

INFORMAZIONI TECNICHE / TECHNICAL INFORMATION

Composizione / composition	30% CO - 2% PU - 68% PVC
Martindale / martindale	>50.000 cicli/cycles
Pilling / Pilling	-

MANUTENZIONE / MAINTENANCE



MARTIN 101



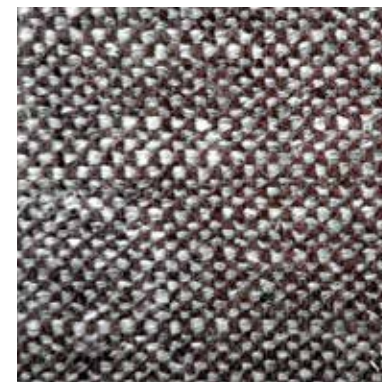
MARTIN 102



MARTIN 103



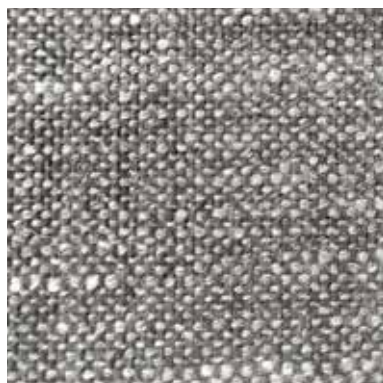
MARTIN 104



MARTIN 105



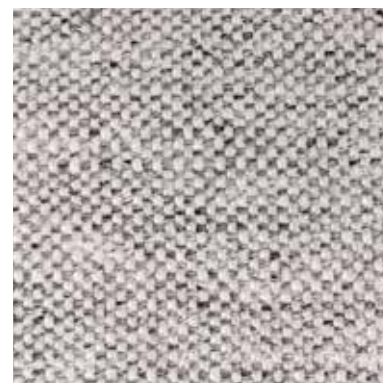
MARTIN 106



MARTIN 107



MARTIN 108



MARTIN 109

INFORMAZIONI TECNICHE / TECHNICAL INFORMATION

Composizione / composition	28% PL - 23% LI - 14% WO - 13% CO - 9% VI - 7% PA - 5% PC
Martindale / martindale	50.000 cicli/cycles
Pilling / Pilling	4

MANUTENZIONE / MAINTENANCE



CAT. M

Marna



MARNA 002



MARNA 111



MARNA 200



MARNA 400



MARNA 402



MARNA 405



MARNA 406



MARNA 500



MARNA 603



MARNA 702

INFORMAZIONI TECNICHE / TECHNICAL INFORMATION

Composizione / composition	95% PL - 5%LI
Martindale / martindale	40.000 cicli/cycles
Pilling / Pilling	4

MANUTENZIONE / MAINTENANCE



CAT. M

Marna



MARNA 704



MARNA 800



MARNA 801



MARNA 901

INFORMAZIONI TECNICHE / TECHNICAL INFORMATION

Composizione / composition	95% PL - 5%LI
Martindale / martindale	40.000 cicli/cycles
Pilling / Pilling	4

MANUTENZIONE / MAINTENANCE



CAT. M

Marbella



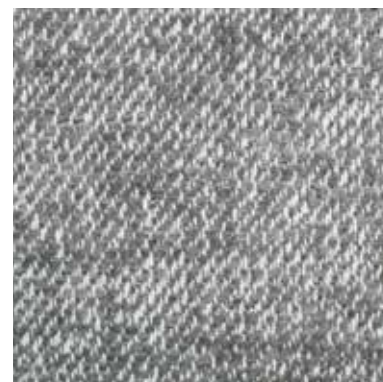
MARBELLA 001



MARBELLA 002



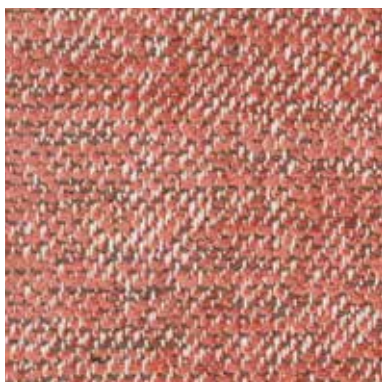
MARBELLA 004



MARBELLA 005



MARBELLA 006



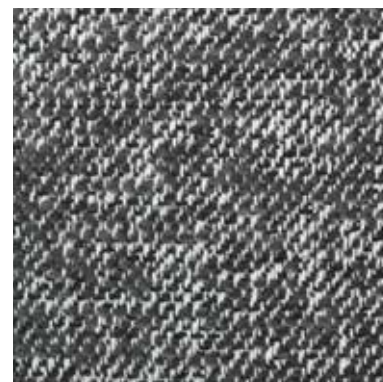
MARBELLA 012



MARBELLA 014



MARBELLA 018



MARBELLA 021



MARBELLA 100

INFORMAZIONI TECNICHE / TECHNICAL INFORMATION

Composizione / composition	65% CO - 35% PL
Martindale / martindale	50.000 cicli/cycles
Pilling / Pilling	4/5

MANUTENZIONE / MAINTENANCE



CAT. M

Manhattan



MANHATTAN 001



MANHATTAN 002



MANHATTAN 009



MANHATTAN 012



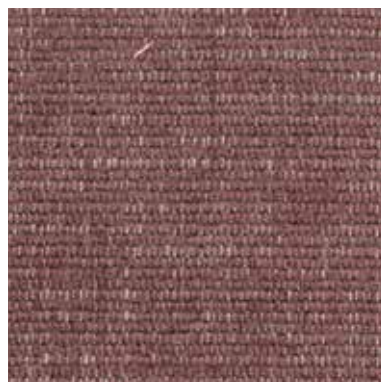
MANHATTAN 017



MANHATTAN 019



MANHATTAN 020



MANHATTAN 021



MANHATTAN 102



MANHATTAN 103

INFORMAZIONI TECNICHE / TECHNICAL INFORMATION

Composizione / composition	50% PL - 27% PC - 9% CO - 7% LI - 7% VI
Martindale / martindale	25.000 cicli/cycles
Pilling / Pilling	5

MANUTENZIONE / MAINTENANCE

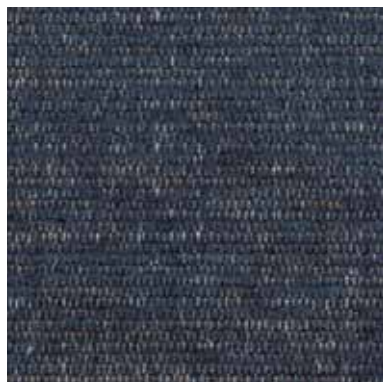


CAT. M

Manhattan



MANHATTAN 104

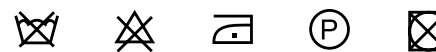


MANHATTAN 105

INFORMAZIONI TECNICHE / TECHNICAL INFORMATION

Composizione / composition	50% PL - 27% PC - 9% CO - 7% LI - 7% VI
Martindale / martindale	25.000 cicli/cycles
Pilling / Pilling	5

MANUTENZIONE / MAINTENANCE



CAT. M

Malaga



MALAGA 01



MALAGA 04



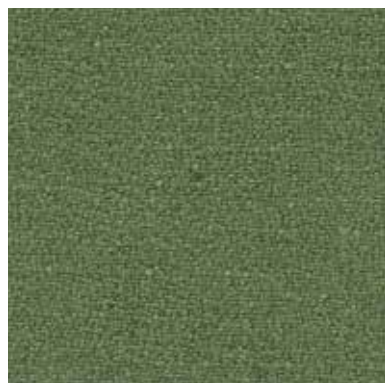
MALAGA 06



MALAGA 07



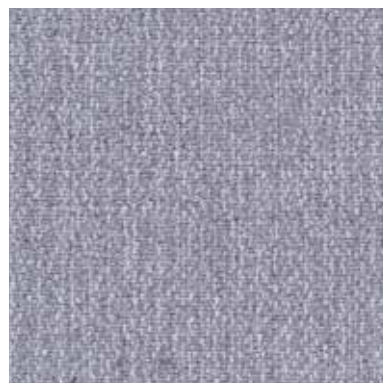
MALAGA 08



MALAGA 09



MALAGA 12



MALAGA 15



MALAGA 16

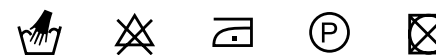


MALAGA 24

INFORMAZIONI TECNICHE / TECHNICAL INFORMATION

Composizione / composition	50% VI - 21% CO - 19% LI - 10% PL
Martindale / martindale	35.000 cicli/cycles
Pilling / Pilling	4/5

MANUTENZIONE / MAINTENANCE

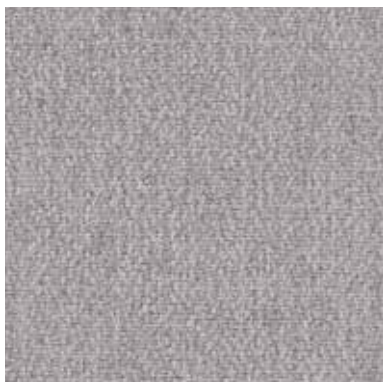


CAT. M

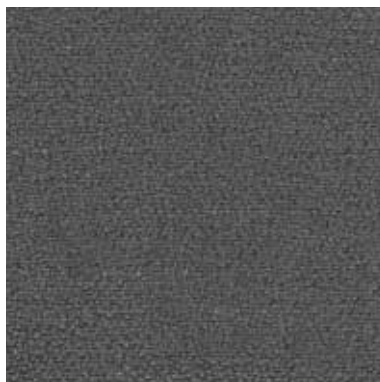
Malaga



MALAGA 26



MALAGA 40



MALAGA 41

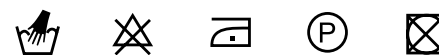


MALAGA 50

INFORMAZIONI TECNICHE / TECHNICAL INFORMATION

Composizione / composition	50% VI - 21% CO - 19% LI - 10% PL
Martindale / martindale	35.000 cicli/cycles
Pilling / Pilling	4/5

MANUTENZIONE / MAINTENANCE



CAT. L

Lumen



LUMEN 100



LUMEN 111



LUMEN 400



LUMEN 402



LUMEN 404



LUMEN 406



LUMEN 500



LUMEN 600



LUMEN 603



LUMEN 604

INFORMAZIONI TECNICHE / TECHNICAL INFORMATION

Composizione / composition	97% PL - 3% LI
Martindale / martindale	40.000 cicli/cycles
Pilling / Pilling	3/4

MANUTENZIONE / MAINTENANCE



CAT. L

Lumen



LUMEN 701



LUMEN 705



LUMEN 800



LUMEN 802

INFORMAZIONI TECNICHE / TECHNICAL INFORMATION

Composizione / composition	97% PL - 3% LI
Martindale / martindale	40.000 cicli/cycles
Pilling / Pilling	3/4

MANUTENZIONE / MAINTENANCE



CAT. L

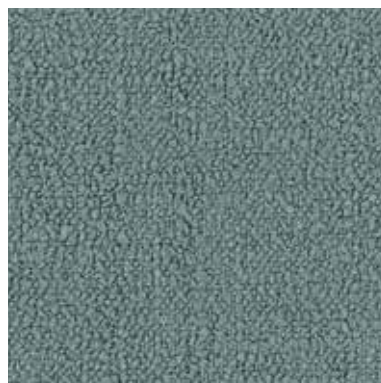
Lounge



LOUNGE 310



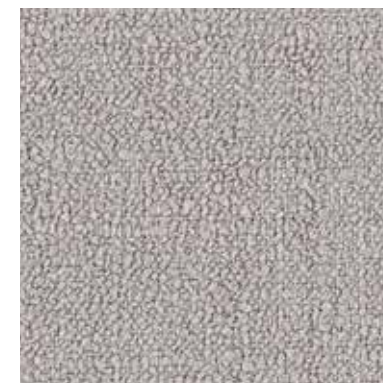
LOUNGE 315



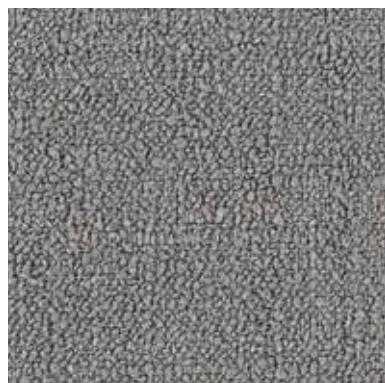
LOUNGE 319



LOUNGE 325



LOUNGE 331



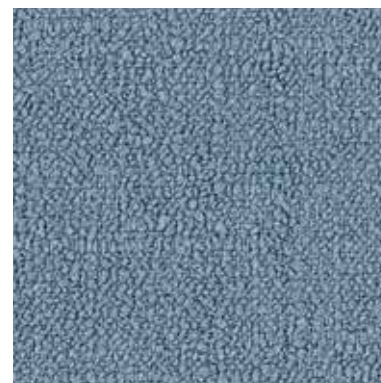
LOUNGE 332



LOUNGE 335



LOUNGE 348



LOUNGE 353

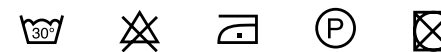


LOUNGE 357

INFORMAZIONI TECNICHE / TECHNICAL INFORMATION

Composizione / composition	100% PL
Martindale / martindale	30.000 cicli/cycles
Pilling / Pilling	4

MANUTENZIONE / MAINTENANCE

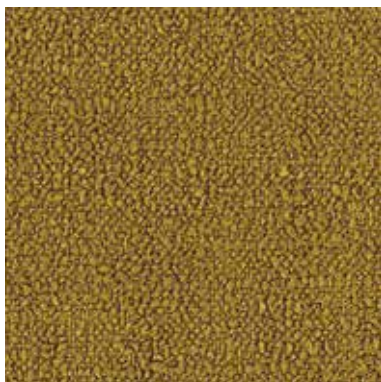


CAT. L

Lounge



LOUNGE 376



LOUNGE 381



LOUNGE 388



LOUNGE 392



LOUNGE 394

INFORMAZIONI TECNICHE / TECHNICAL INFORMATION

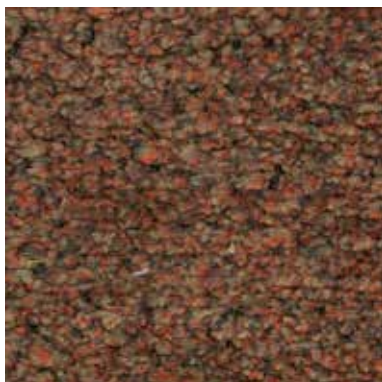
Composizione / composition	100% PL
Martindale / martindale	30.000 cicli/cycles
Pilling / Pilling	4

MANUTENZIONE / MAINTENANCE



CAT. L

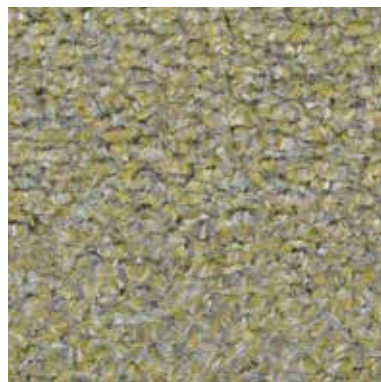
Lolita



LOLITA 105



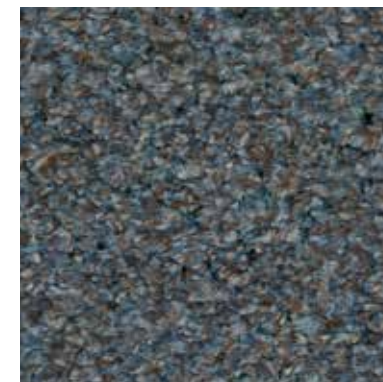
LOLITA 125



LOLITA 129



LOLITA 131



LOLITA 133



LOLITA 134



LOLITA 153

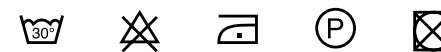


LOLITA 159

INFORMAZIONI TECNICHE / TECHNICAL INFORMATION

Composizione / composition	100% PL
Martindale / martindale	40.000 cicli/cycles
Pilling / Pilling	4

MANUTENZIONE / MAINTENANCE



CAT. L

Logan



LOGAN 001



LOGAN 002



LOGAN 004



LOGAN 006



LOGAN 011



LOGAN 012



LOGAN 014



LOGAN 015



LOGAN 019

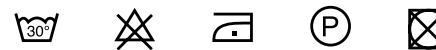


LOGAN 020

INFORMAZIONI TECNICHE / TECHNICAL INFORMATION

Composizione / composition	100% PL
Martindale / martindale	100.000 cicli/cycles
Pilling / Pilling	5

MANUTENZIONE / MAINTENANCE

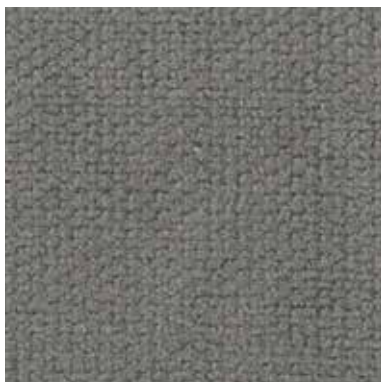


CAT. L

Logan



LOGAN 021



LOGAN 022



LOGAN 025

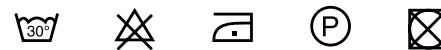


LOGAN 026

INFORMAZIONI TECNICHE / TECHNICAL INFORMATION

Composizione / composition	100% PL
Martindale / martindale	100.000 cicli/cycles
Pilling / Pilling	5

MANUTENZIONE / MAINTENANCE



CAT. L

Link



LINK 001



LINK 002



LINK 003



LINK 004



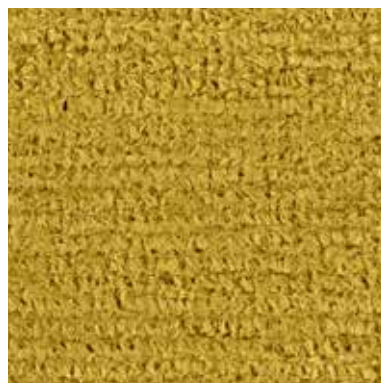
LINK 005



LINK 007



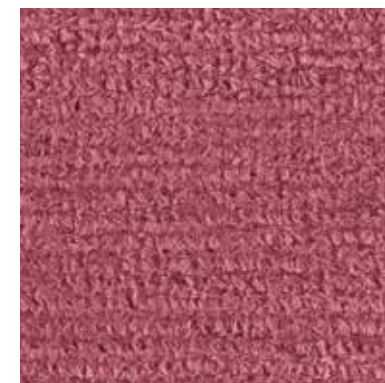
LINK 008



LINK 010



LINK 015

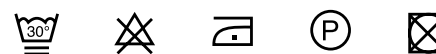


LINK 016

INFORMAZIONI TECNICHE / TECHNICAL INFORMATION

Composizione / composition	97% PL - 3% VI
Martindale / martindale	30.000 cicli/cycles
Pilling / Pilling	4

MANUTENZIONE / MAINTENANCE

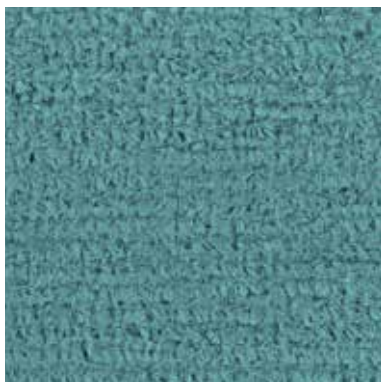


CAT. L

Link



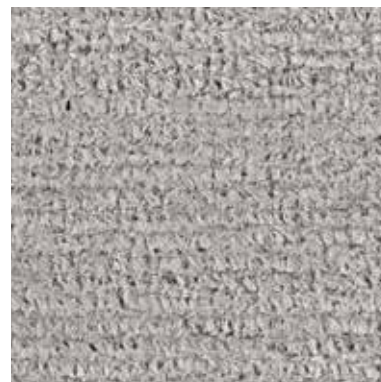
LINK 020



LINK 022



LINK 025



LINK 028

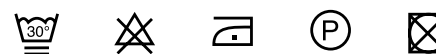


LINK 033

INFORMAZIONI TECNICHE / TECHNICAL INFORMATION

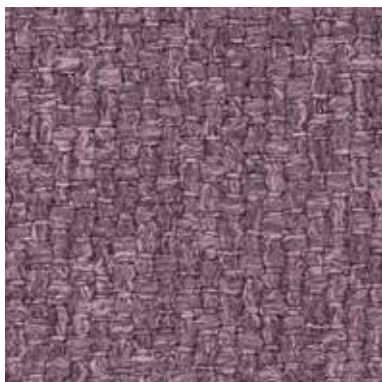
Composizione / composition	97% PL - 3% VI
Martindale / martindale	30.000 cicli/cycles
Pilling / Pilling	4

MANUTENZIONE / MAINTENANCE



CAT. E

Even



EVEN 003



EVEN 111



EVEN 300



EVEN 408



EVEN 503



EVEN 600



EVEN 604



EVEN 608




EVEN 609



EVEN 610

INFORMAZIONI TECNICHE / TECHNICAL INFORMATION

Composizione / composition	100% PL
Martindale / martindale	50.000 cicli/cycles
Pilling / Pilling	4

 idrorepellente
water repellent

MANUTENZIONE / MAINTENANCE

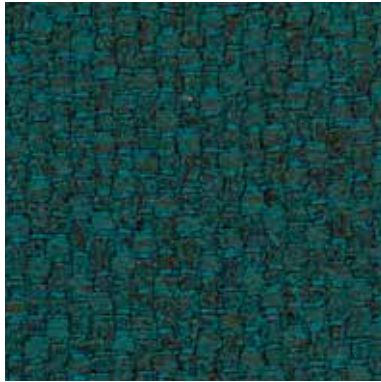


CAT. E

Even



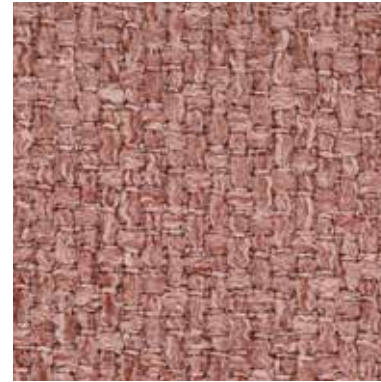
EVEN 705



EVEN 708




EVEN 801



EVEN 901

INFORMAZIONI TECNICHE / TECHNICAL INFORMATION

Composizione / composition	100% PL
Martindale / martindale	50.000 cicli/cycles
Pilling / Pilling	4

 idrorepellente
water repellent

MANUTENZIONE / MAINTENANCE



CAT. E

Enter



ENTER 006



ENTER 009



ENTER 013



ENTER 020



ENTER 024



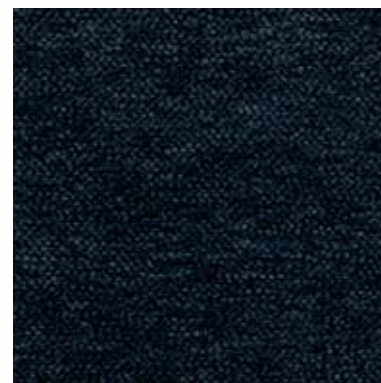
ENTER 025



ENTER 030



ENTER 037



ENTER 041



ENTER 044

INFORMAZIONI TECNICHE / TECHNICAL INFORMATION

Composizione / composition	100% PL
Martindale / martindale	40.000 cicli/cycles
Pilling / Pilling	4

MANUTENZIONE / MAINTENANCE



CAT. E

Enter



ENTER 057



ENTER 059



ENTER 062



ENTER 074



ENTER 100



ENTER 101

INFORMAZIONI TECNICHE / TECHNICAL INFORMATION

Composizione / composition	100% PL
Martindale / martindale	40.000 cicli/cycles
Pilling / Pilling	4

MANUTENZIONE / MAINTENANCE



CAT. E

Ellis



ELLIS 111



ELLIS 301



ELLIS 400



ELLIS 401



ELLIS 502



ELLIS 601



ELLIS 602



ELLIS 603



ELLIS 700

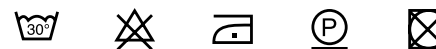


ELLIS 701

INFORMAZIONI TECNICHE / TECHNICAL INFORMATION

Composizione / composition	95% PL - 5% LI
Martindale / martindale	50.000 cicli/cycles
Pilling / Pilling	4

MANUTENZIONE / MAINTENANCE





ELLIS 702



ELLIS 801

INFORMAZIONI TECNICHE / TECHNICAL INFORMATION

Composizione / composition	95% PL - 5% LI
Martindale / martindale	50.000 cicli/cycles
Pilling / Pilling	4

MANUTENZIONE / MAINTENANCE

CAT. E

Easy Care



EASY CARE 001



EASY CARE 002



EASY CARE 003



EASY CARE 006



EASY CARE 007



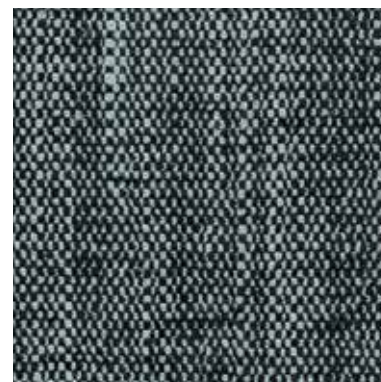
EASY CARE 008



EASY CARE 010



EASY CARE 012




EASY CARE 013





EASY CARE 015

INFORMAZIONI TECNICHE / TECHNICAL INFORMATION

Composizione / composition	70% PL - 30% LI
Martindale / martindale	50.000 cicli/cycles
Pilling / Pilling	5

 **idrorepellente**
water repellent

 **irrestringibile**
non-shrink

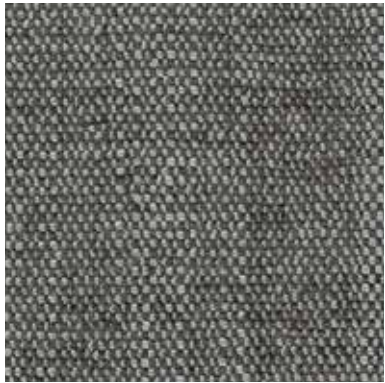
 **antimacchia**
stain resistant

MANUTENZIONE / MAINTENANCE



CAT. E

Easy Care




EASY CARE 016





EASY CARE 017

INFORMAZIONI TECNICHE / TECHNICAL INFORMATION

Composizione / composition	70% PL - 30% LI
Martindale / martindale	50.000 cicli/cycles
Pilling / Pilling	5

 **idrorepellente**
water repellent

 **irrestringibile**
non-shrink

 **antimacchia**
stain resistant

MANUTENZIONE / MAINTENANCE



CAT. A

Atene



ATENE 02



ATENE 03



ATENE 04



ATENE 05



ATENE 06



ATENE 10



ATENE 11



ATENE 20




ATENE 23



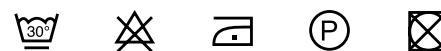
ATENE 24

INFORMAZIONI TECNICHE / TECHNICAL INFORMATION

Composizione / composition	100% PL
Martindale / martindale	50.000 cicli/cycles
Pilling / Pilling	4

 idrorepellente
water repellent

MANUTENZIONE / MAINTENANCE



CAT. A


Atene



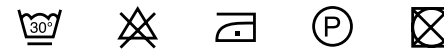
ATENE 29

INFORMAZIONI TECNICHE / TECHNICAL INFORMATION

Composizione / composition	100% PL
Martindale / martindale	50.000 cicli/cycles
Pilling / Pilling	4

 **idrorepellente**
water repellent

MANUTENZIONE / MAINTENANCE



CAT. A

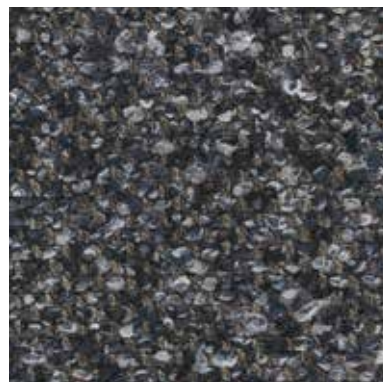
Andorra



ANDORRA 403



ANDORRA 406



ANDORRA 408



ANDORRA 410



ANDORRA 411



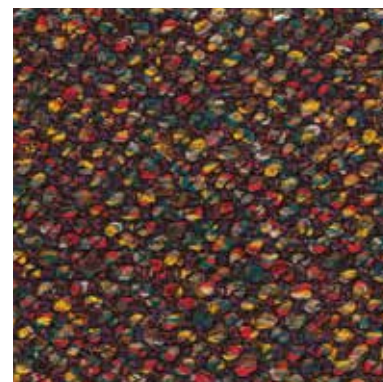
ANDORRA 413



ANDORRA 414



ANDORRA 415



ANDORRA 417



ANDORRA 418

INFORMAZIONI TECNICHE / TECHNICAL INFORMATION

Composizione / composition	99% PES - 1% PAN
Martindale / martindale	100.000 cicli/cycles
Pilling / Pilling	4

MANUTENZIONE / MAINTENANCE



CAT. A

Amalfi



AMALFI 100



AMALFI 101



AMALFI 102



AMALFI 105



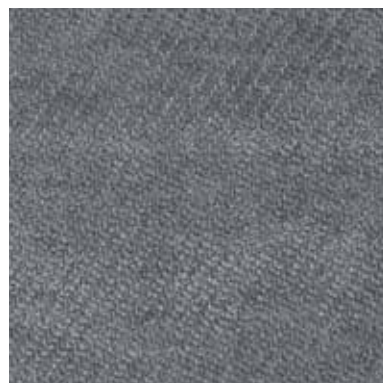
AMALFI 110



AMALFI 120



AMALFI 122




AMALFI 127




AMALFI 130

INFORMAZIONI TECNICHE / TECHNICAL INFORMATION

Composizione / composition	100% PL
Martindale / martindale	85.000 cicli/cycles
Pilling / Pilling	4/5

 idrorepellente
water repellent

 antimacchia
stain resistant

MANUTENZIONE / MAINTENANCE



CAT. A

After



AFTER 011



AFTER 033



AFTER 043



AFTER 045



AFTER 060



AFTER 061



AFTER 063



AFTER 064




AFTER 076




AFTER 084

INFORMAZIONI TECNICHE / TECHNICAL INFORMATION

Composizione / composition	100% PL
Martindale / martindale	60.000 cicli/cycles
Pilling / Pilling	5

 idrorepellente
water repellent

 irrestingibile
non-shrink

MANUTENZIONE / MAINTENANCE



CAT. A


After




AFTER 095

INFORMAZIONI TECNICHE / TECHNICAL INFORMATION

Composizione / composition	100% PL
Martindale / martindale	60.000 cicli/cycles
Pilling / Pilling	5

 idrorepellente
water repellent

 irrestingibile
non-shrink

MANUTENZIONE / MAINTENANCE

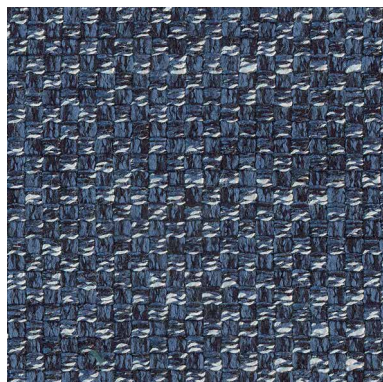


CAT. A

Adria



ADRIA 207



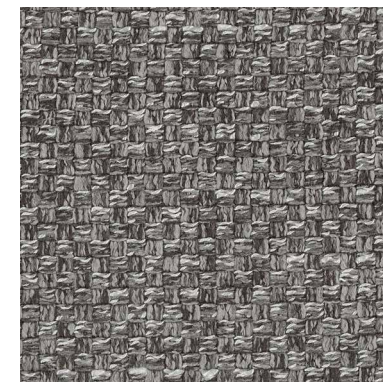
ADRIA 215



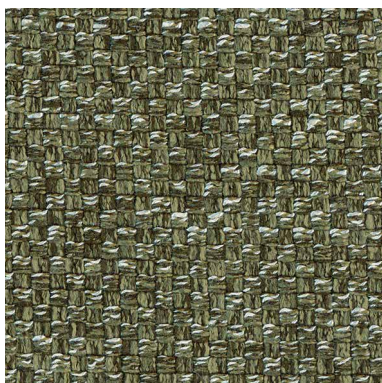
ADRIA 225



ADRIA 231



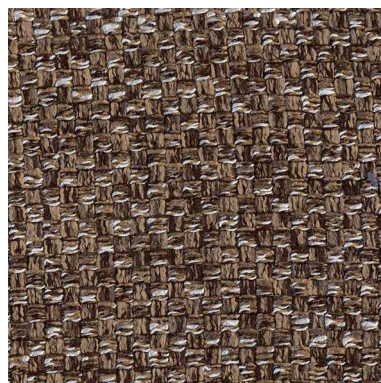
ADRIA 232



ADRIA 262




ADRIA 275



ADRIA 284

INFORMAZIONI TECNICHE / TECHNICAL INFORMATION

Composizione / composition	70% PL - 30% VI
Martindale / martindale	30.000 cicli/cycles
Pilling / Pilling	4

 idrorepellente
water repellent

MANUTENZIONE / MAINTENANCE



**DITRE
ITALIA**

31016 Cordignano (Treviso) Zona Industriale Via del Lavoro, 21
Tel. +39.0438.9999 Fax +39.0438.999993 www.ditreitalia.com info@ditreitalia.it